

Data for Precise Gravure Monitoring

Gravure QC

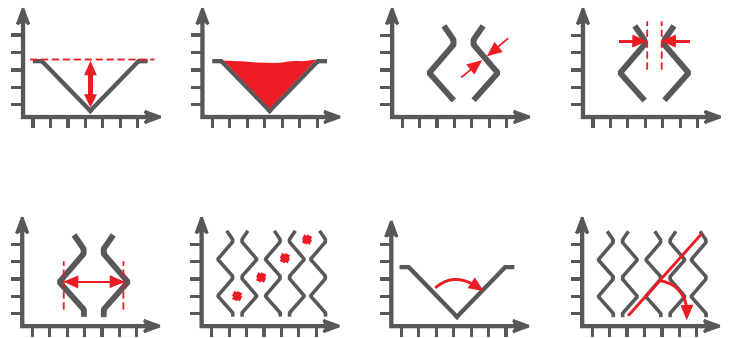
Unlock Precision in Gravure Printing

With cutting-edge algorithms, measuring gravure cylinder volume and condition is now easy for every printer. In just seconds, users can acquire a detailed 3D scan with geometric measurements and a rotating view for easy visual inspection.

RAPID ACCURACY

Comprehensive Analysis

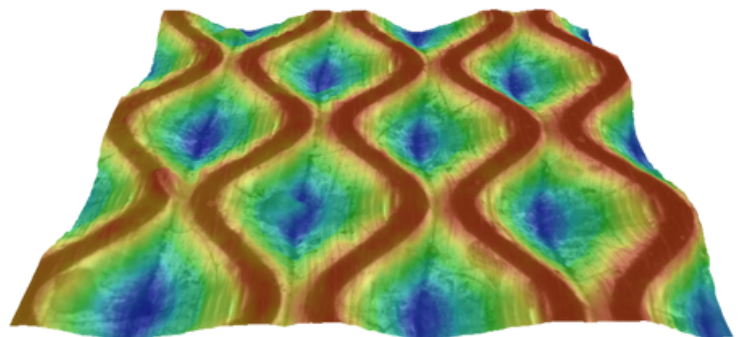
Our software features automatic measurement of volume, depth, openings, wall, channel and consistency of gravure cells, providing comprehensive insights into print quality and performance.



CHOOSE GRAVURE QC

Savings and Sustainability

Knowing the condition of gravure cylinders can significantly cut press setup time, reduce waste, and boost profitability. With a 15-20% decrease in make-ready waste, businesses can enhance operational efficiency and profits.

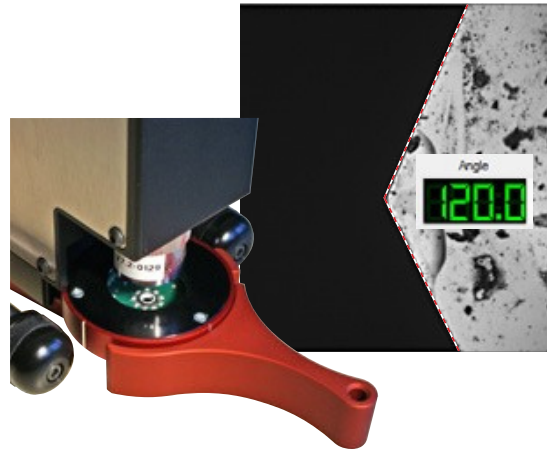


“**If the printer is fully aware of the condition of their Gravure they will be able to improve the press set up time, reduce ink matching and improve production**”

GRAVURE QC OPTIONS

Stylus Analysis

Simple stylus mount and software to check the angle and condition of the stylus. The hardware mount supports OHIO, HELL and MDC styluses. The software allows the visual representation of the stylus for condition and to measure the angle to ± 0.1 degree.



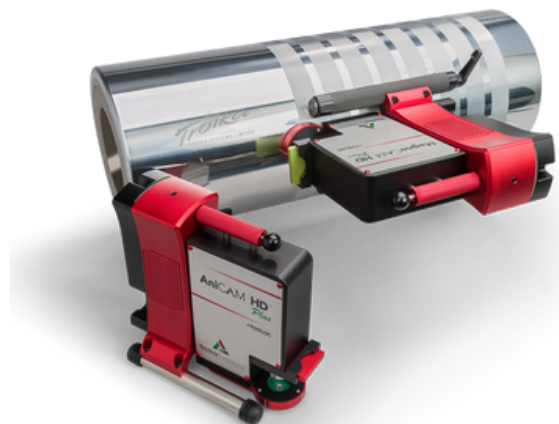
Job ID:	Cylinder ID:	Date Received:	Comment:
Brand A' Soap	Brand A' Soap-C	06/04/2005	wear beyond limits DE RE
Screen	Screen Angle	Stylus Angle	Cylinder Width /
600	LPI	38 Deg	1720 mm
		120.0 Deg	Diameter
			140 mm
			Engraving Percentage
			5 %
			Print Distance
			55
Job History - [5]			
Date	Revolutions	Distance (m)	
05/12/2013	50000	21991	
21/05/2013	30000	13500	
06/05/2013	31000	14000	
05/04/2013	30000	13500	
04/03/2013	30000	13500	
Totals:	171000	76491	
General history - [3]			
Date	Type	Comments	
18/03/2024	Colour	Volume changed colour density lower, use 25% mo	
17/04/2009	Damage	Scratched - 9mm at cog end	
21/12/2008	Cleaned	Bicarb wash	
Reference:			
Subsequent readings - [3]			
Date: 04/03/2013 - 11:47 - Operator: PJ			
Position	Depth	Volume	Opening
Left	44.0	13.7	172
Middle	43.0	13.5	171
Right	44.0	13.6	172
Average	43.7	13.6	171
Date: 21/05/2013 - 14:10 - Operator: Heinz			
Position	Depth	Volume	Opening
Left	39.0	11.9	165
Middle	38.0	11.8	162
Right	39.0	11.9	164
Average	38.7	11.9	163

Cylinder Management System

Simplify gravure management with our Cylinder Management System (**CMS**). Gain detailed insights into each roll in your inventory, including comprehensive data, history tracking, and visual insights.

MagneCAM Option

Position an AniCAM HD™ *Plus* on steel cored cylinders/rolls rotated at any angle, incorporating magnetic legs and special internal drive system to allow measurement on press, where access or removal of cylinders or rolls is difficult.



If you can't **measure** it,
you can't **control** it.

+44 (0)1793 766355
www.troika-systems.com
info@troika-systems.com

