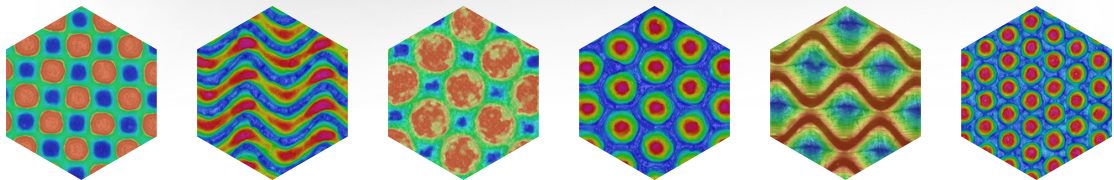


Ultimate solution in print quality control

AniCAM HD™ *Plus*



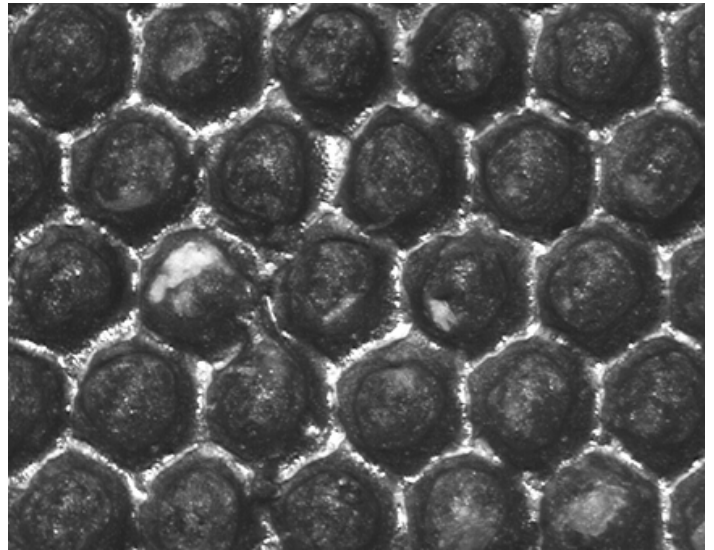
Introducing the AniCAM HD™ *Plus* from Troika Systems

With high-res imaging, rapid 3D scanning, and magnetic quick change lens control for pinpoint accuracy. Faster setup, sharper results, and smarter tools. All in one powerful upgrade!

All New Features

High-Resolution Image Sensor

Our new image sensor, boasting an impressive 1024x768 resolution, captures details with unprecedented clarity. This results in sharper, clearer images and heightened measurement accuracy, contributing to the precision of your work.



Kinematic Lenses

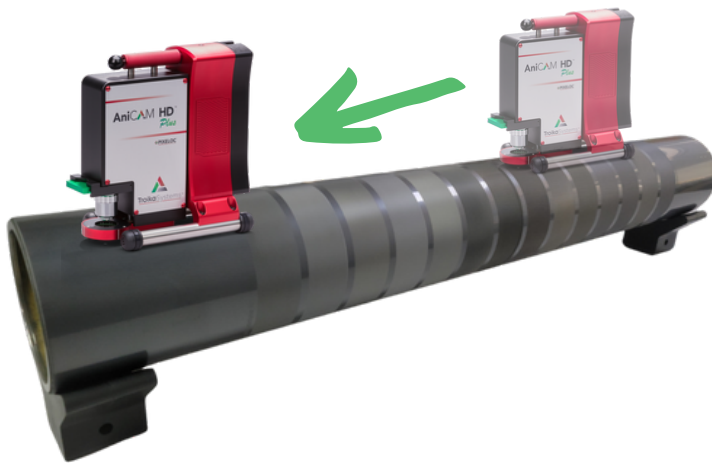
Quickly adjust magnification levels with our new kinematic lenses. Magnets lock and release the lenses, ensuring consistent and accurate measurements every time.

And Much More...

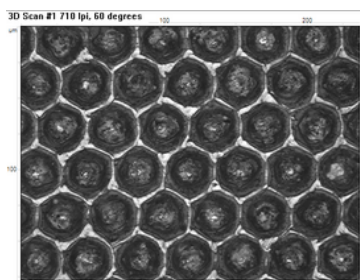
- High-intensity LEDs offer superior illumination for better cell detection
- Autofocus & Two Touch Setup
- New PIXELOC™ system, measurements are precise down to 0.25µm



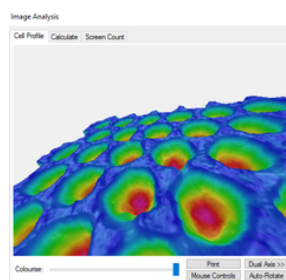
AniCAM Workflow



Take up to 5 readings across the roll or cylinder to get condition and variance information



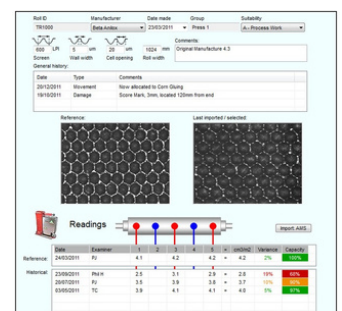
Get an automatic 3D scan in seconds



Rotatable 3D View for visual inspection

Customer	Troika Systems Limited				
Roll	700lpi	26/03/2024			
Operator		11:23			
Comment					
Cell Information					
Volume	4.4	cm ³ /m ²	Wall	0.0	um
Depth	13	um	Opening	0.0	um
Screen	710	lpi	Angle	60	deg
			Print Distance	0	

Volume and other results are shown in the Info page

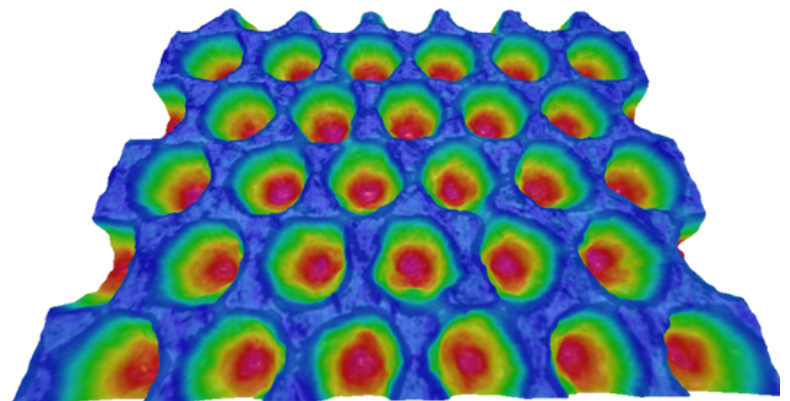


Printed as a report, transferred to Troikas Anilox Management System, or exported

Software Packages

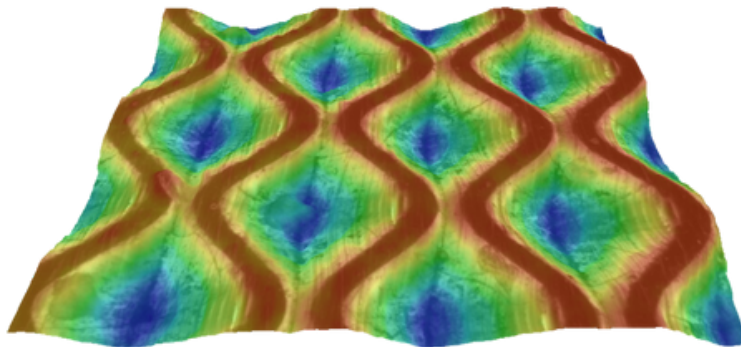
Anilox Quality Control (QC)

Ensure optimal anilox performance with our Anilox QC software package. Analyse engraving depth, volume, and condition to achieve precise ink transfer and consistent print quality.



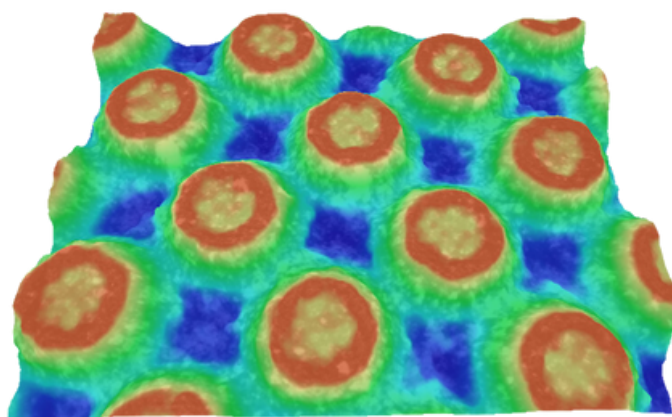
Gravure Quality Control (QC)

Elevate gravure printing standards with our Gravure QC software package. Monitor cylinder data, assess condition, and plan maintenance to avoid costly re-engraving and downtime.



Flexoplate Quality Control (QC)

Streamline flexoplate production with our Flexoplate QC software package. Analyse dot percentage, screen count, and plate condition to optimize ink usage and minimise waste.



Database Options

Gain full control with our **Anilox Management System (AMS)** and **Cylinder Management System (CMS)** packages.

Offering detailed information on each roll in your printer's inventory. Simplify your roll and cylinder management – trust **AMS** and **CMS** for comprehensive data, history tracking, and visual insights for every roll in your inventory.

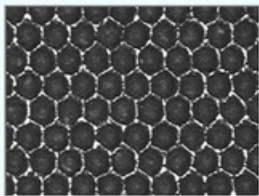
Roll ID	Manufacturer	Date made	Group	Suitability
TR1000	Beta Anilox	23/03/2011	Press 1	A - Process Work

Screen	Wall width	Cell opening	Roll width	Comments
600 LPI	5 um	20 um	1024 mm	Original Manufacture 4.3

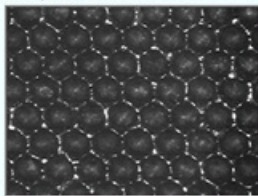
General history:


Date	Type	Comments
20/12/2011	Movement	Now allocated to Corn Gluing
19/10/2011	Damage	Score Mark, 3mm, located 120mm from end

Reference:

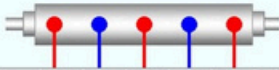


Last imported / selected:





Readings



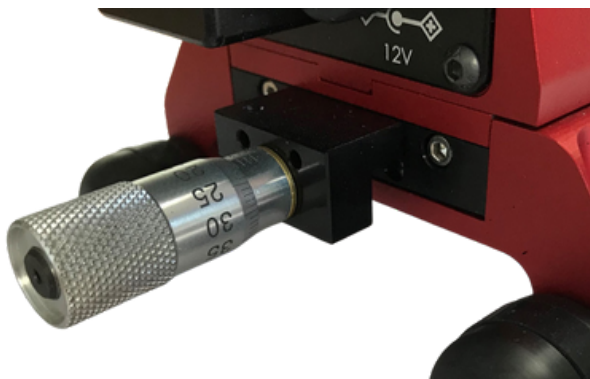
Import AMS

Date	Examiner	1	2	3	4	5	=	cm3/m2	Variance	Capacity
24/03/2011	PJ	4.1		4.2		4.2	=	4.2	2%	100%
23/09/2011	Phil H	2.5		3.1		2.9	=	2.8	19%	68%
20/07/2011	PJ	3.5		3.9		3.8	=	3.7	10%	96%
03/05/2011	TC	3.9		4.1		4.1	=	4.0	5%	97%

Hardware Features

MagneCAM

Position an AniCAM HD™ *Plus* on steel cored cylinders/rolls rotated at any angle, incorporating magnetic legs and special internal drive system. Enables measurement on press, where access is difficult.

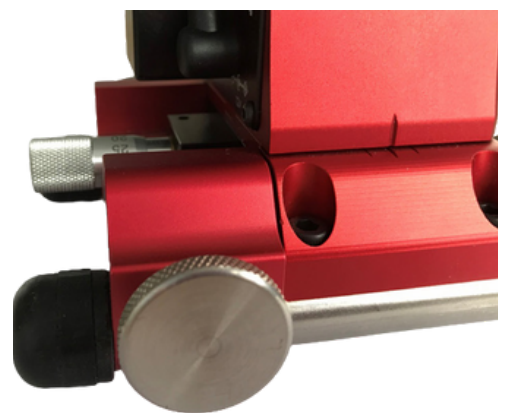


X-Axis Micro Adjustment

The X-Axis Micro-Adjuster option allows users to laterally move the analysis head of the camera by up to 10 mm (± 5 mm), aiding in the detection of single line engravings with precision.

Y-Axis Micro Adjustment

The Y-Axis adjustment operates the wheels of the AniCAM's feet. This unique feature ensures a constant distance of the entire measuring area to the camera, regardless of the amount of movement



If you can't **measure** it,
you can't **control** it.

+44 (0)1793 766355
www.troika-systems.com
info@troika-systems.com

